

MONTHLY MEMBERSHIP PROGRESS REPORT

District 318 D

Results as of: 6/30/2024

GMT:

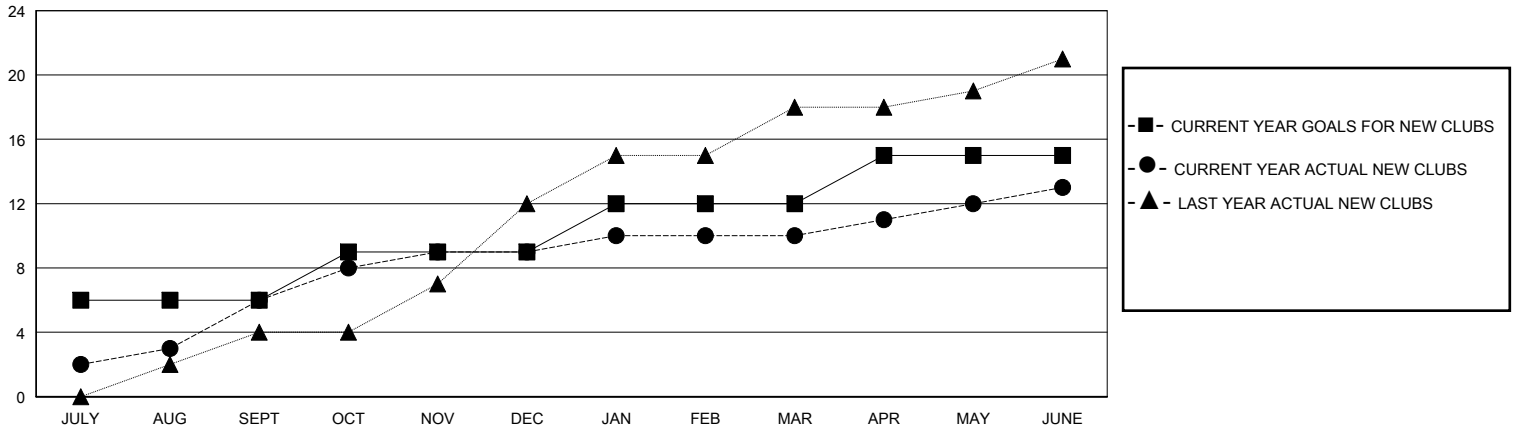
LOCATION INDIA

GMT CA

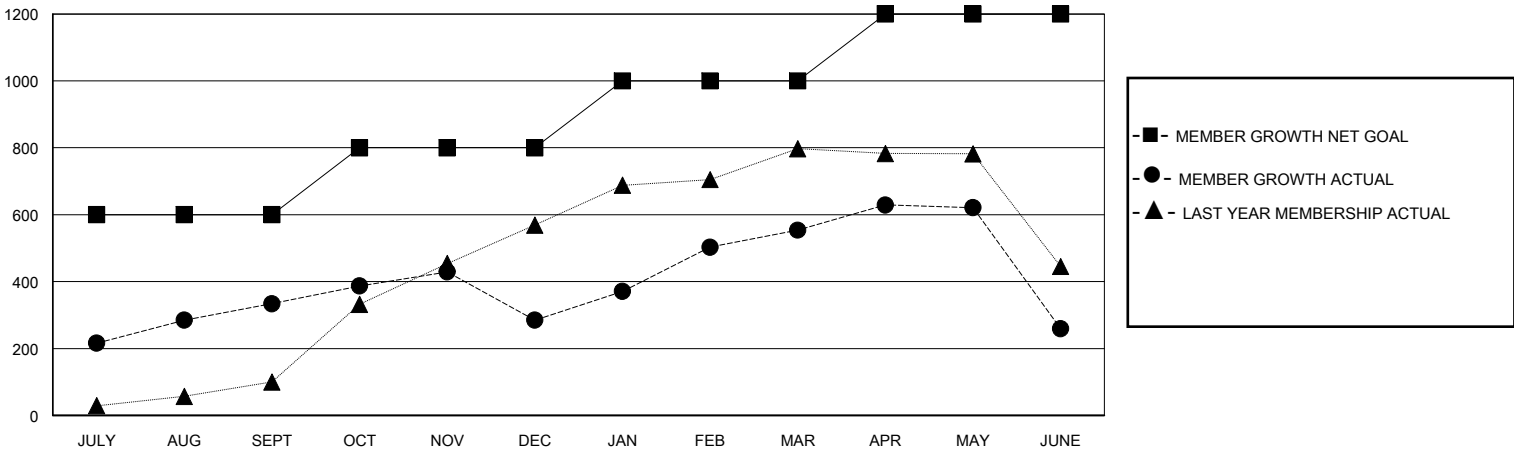
Clubs			
RESULTS FOR 2023-2024			
QUARTER	NEW CLUB GOAL	NEW CLUBS	DROPPED CLUBS
JULY/AUG/SEPT	6	6	0
OCT/NOV/DEC	3	3	4
JAN/FEB/MAR	3	1	0
APR/MAY/JUNE	3	3	0

Members			
RESULTS FOR 2023-2024			
QUARTER	MEMBER GROWTH NET GOAL	MEMBER GROWTH ACTUAL	DROPPED MEMBERS ACTUAL (including transfers)
JULY/AUG/SEPT	600	476	125
OCT/NOV/DEC	200	287	328
JAN/FEB/MAR	200	320	44
APR/MAY/JUNE	200	261	529

GOALS AND ACTUAL NEW CLUBS CUMULATIVE



GOALS AND ACTUAL MEMBERS CUMULATIVE



DROPPED CLUBS: 4 DROPPED MEMBERS DECEASED 23 CLUB CANCELLED 76 OTHER 925 TOTAL 1,024	157 CLUBS OF 204 ADDED 1 OR MORE NEW MEMBERS	GENDER DISTRIBUTION MALE 5,665 (82.68%) FEMALE 1,187 (17.32%)
	CLICK HERE FOR CUMULATIVE MEMBERSHIP DATA	TOTAL FAMILY UNIT MEMBERS 2,019 FAMILY MEMBERS PAYING HALF DUES 1,057